

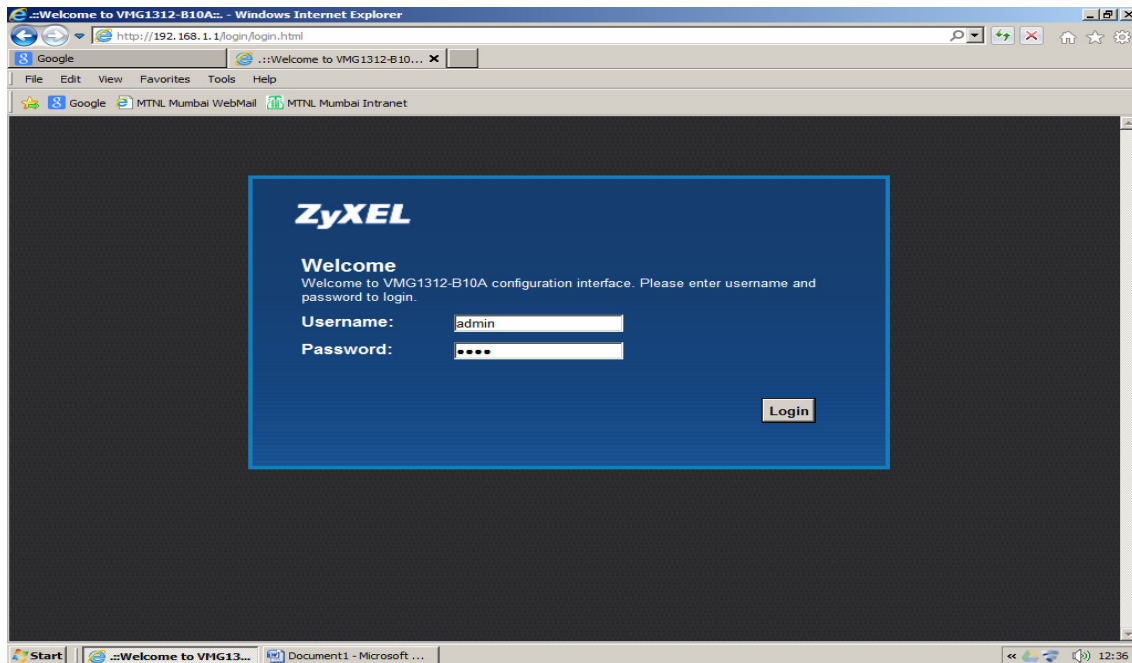
Configuration of ZyXEL VMG 1312 B 10 A Router

Open Router page

<http://192.168.1.1>

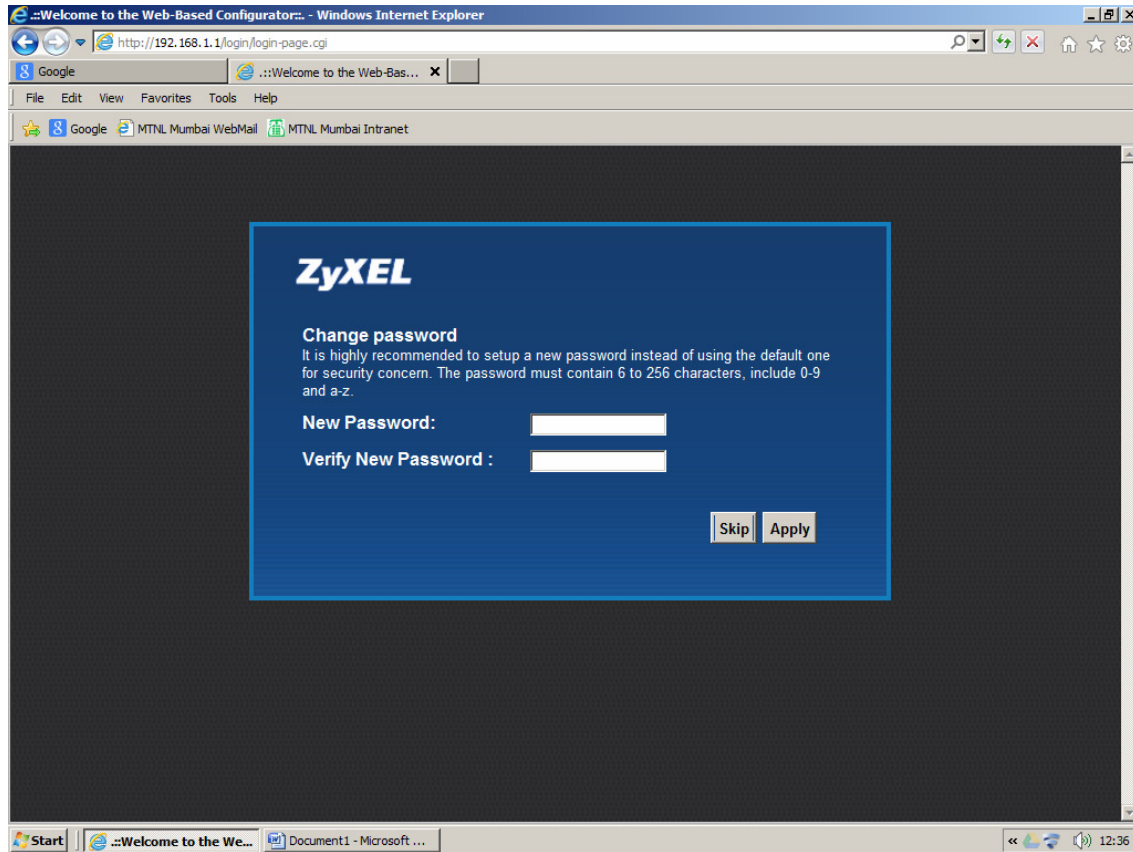
Enter Username :- admin

Password : 1234



Click on **Login** Button

You will get Screen as below

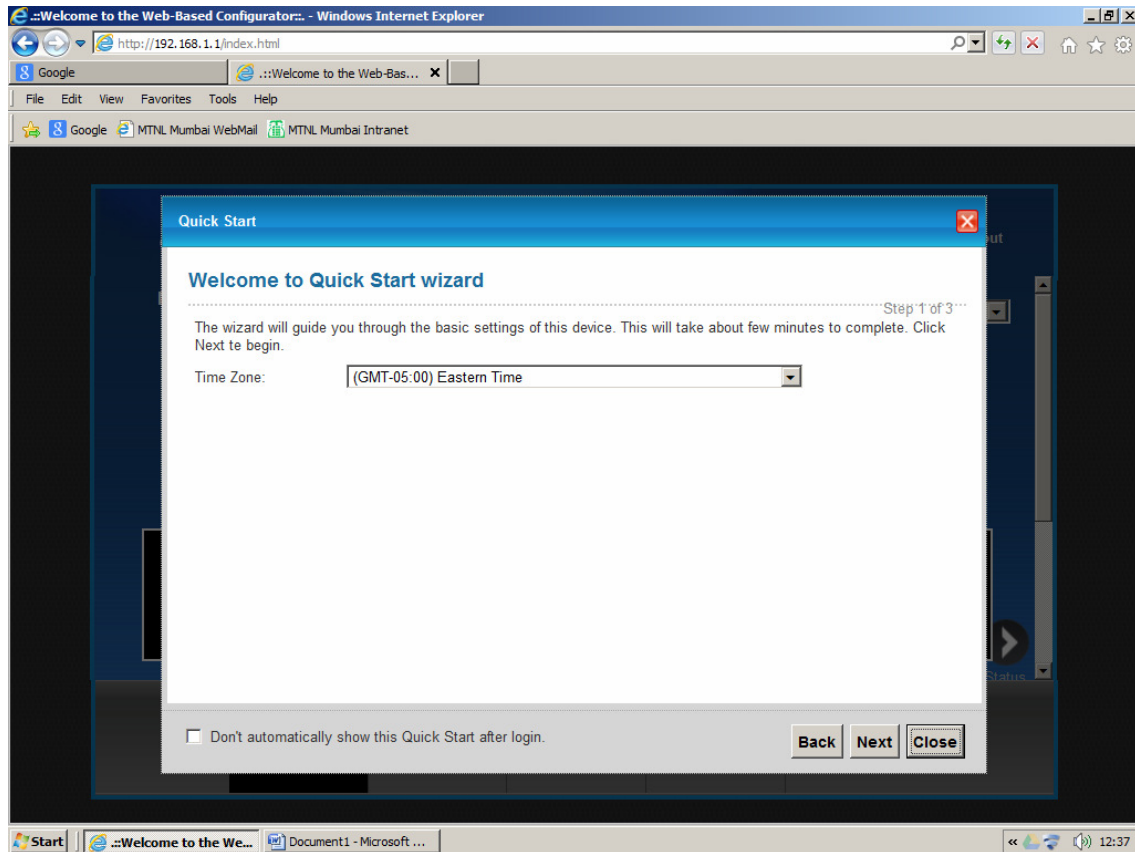


Note : Here you can change Router Password

otherwise

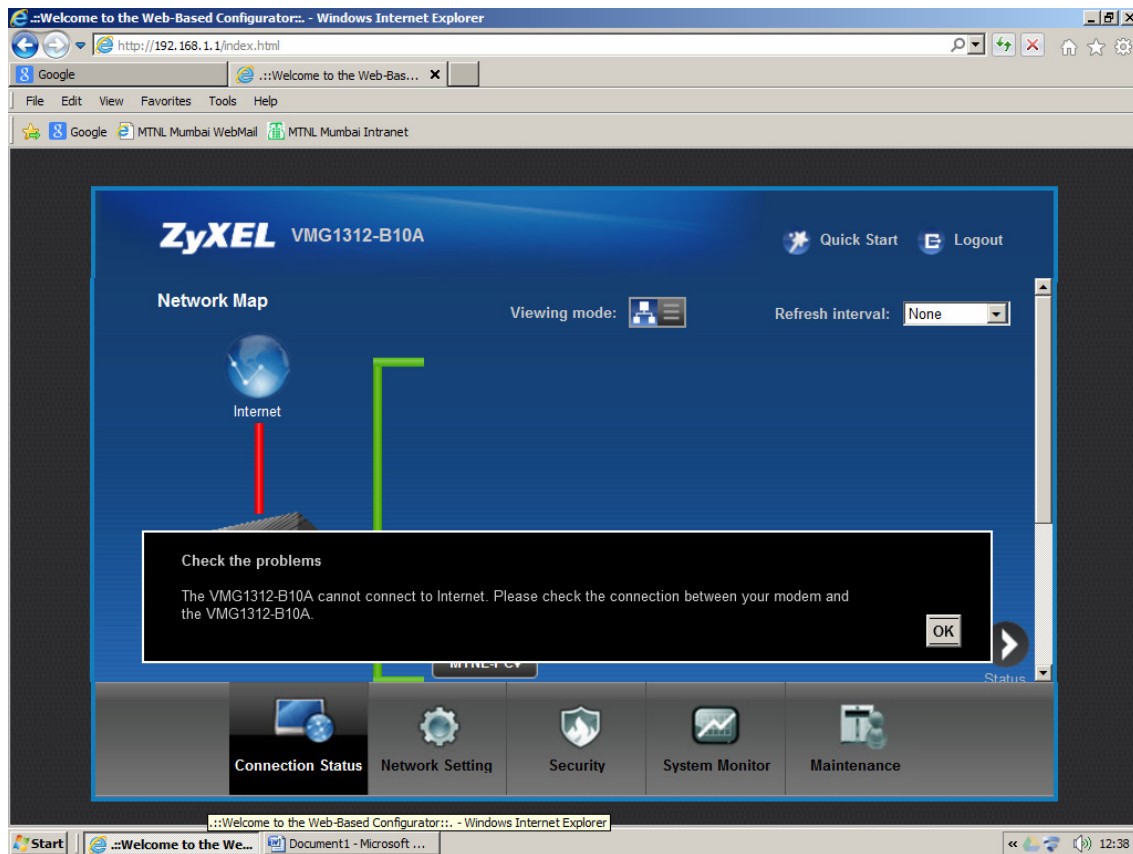
Click on Skip Button

You will get Screen as below



Click on **Close** Button

You will get Screen as below



Click on **Network Setting**

Go to **Broadband**

Windows Internet Explorer window showing the ZyXEL VMG1312-B10A web-based configurator interface.

The browser address bar shows the URL: `http://192.168.1.1/index.html`.

The main content area displays the ZyXEL VMG1312-B10A Network Map. The interface includes a "Quick Start" button and a "Logout" button in the top right corner. The "Network Map" section shows a diagram with an "Internet" icon and a "Viewing mode" dropdown menu. A "Refresh interval" dropdown menu is set to "None".

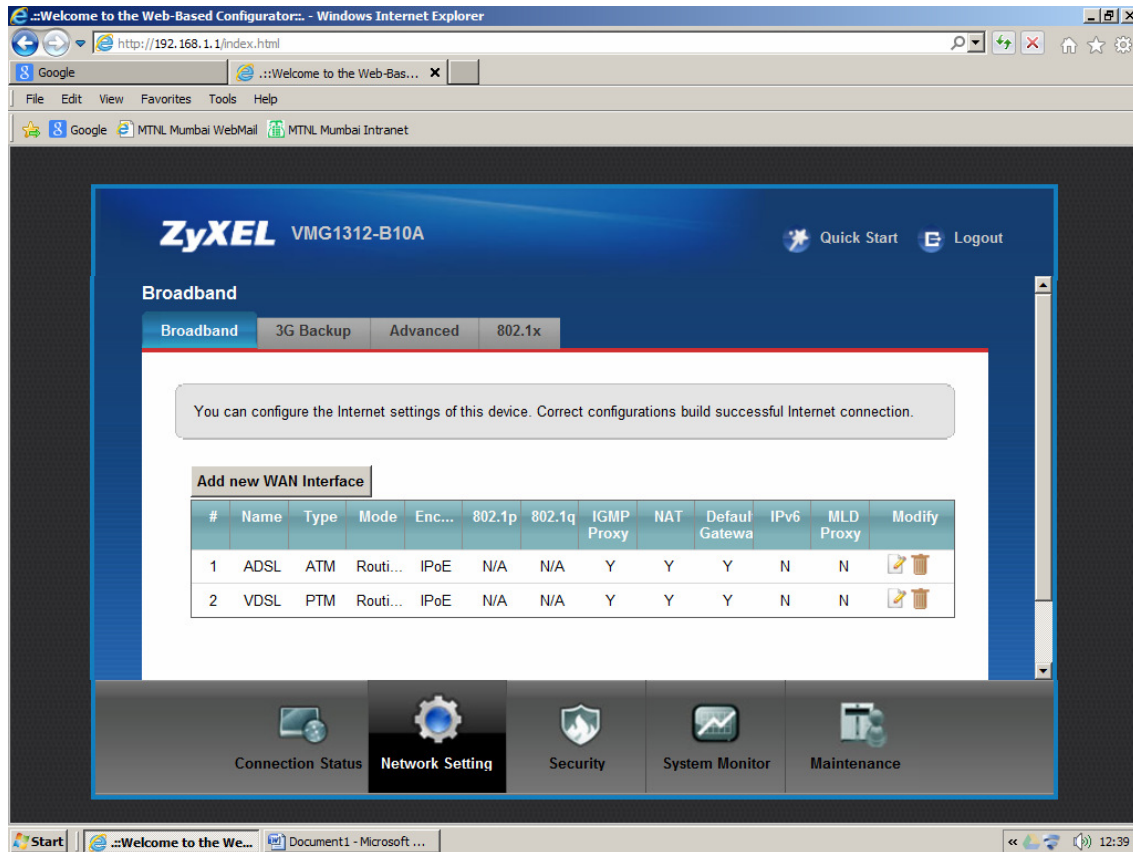
A "Check the problems" dialog box is open, displaying the message: "The VMG1312-B10A ca the VMG1312-B10A." Below the message is an "OK" button.

A context menu is open over the "Internet" icon, listing the following options:

- > Broadband
- > Wireless
- > Home Networking
- > Routing
- > QoS
- > NAT
- > DNS
- > Interface Group
- > USB Service

The bottom navigation bar contains five tabs: "Connection Status", "Network Setting", "Security", "System Monitor", and "Maintenance".

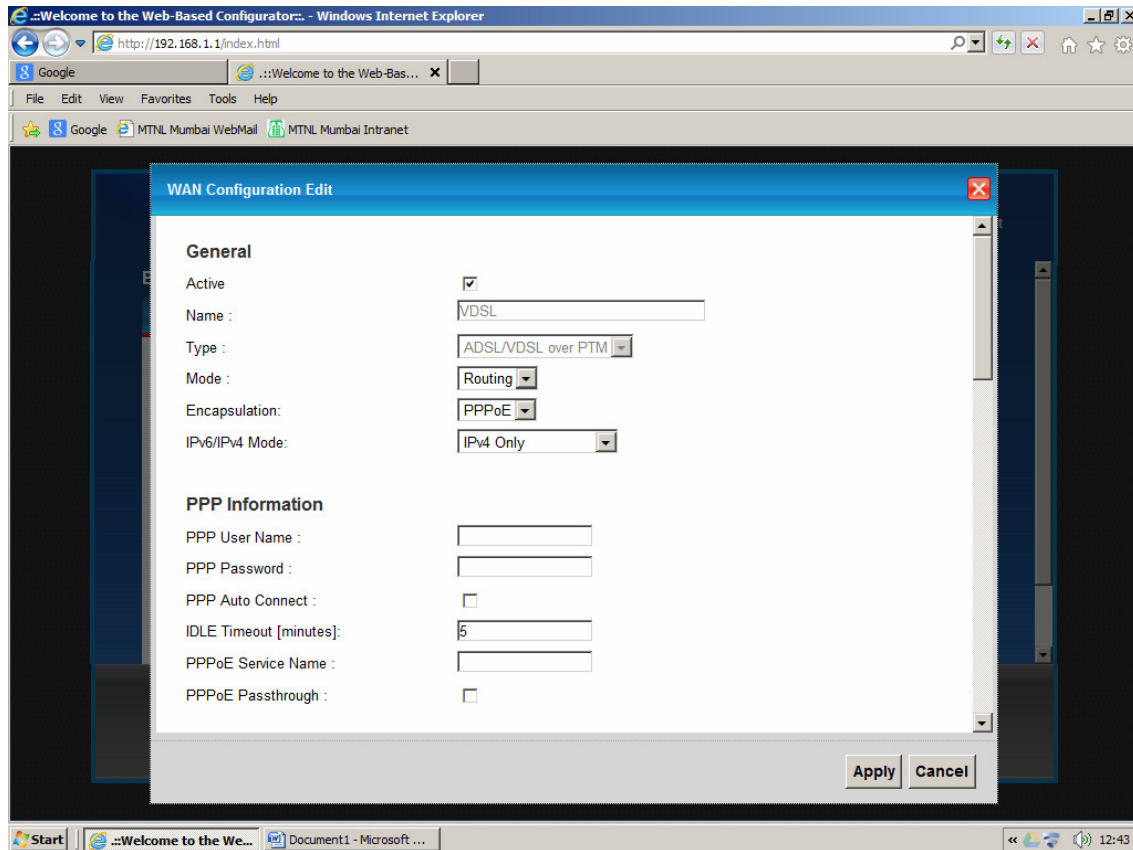
The Windows taskbar at the bottom shows the Start button, the active browser window, and a "Document1 - Microsoft ..." window. The system tray on the right shows the time as 12:39.



Delete above WAN Interfaces if created

Click on **Add new WAN Interface** Button

You will get screen as below



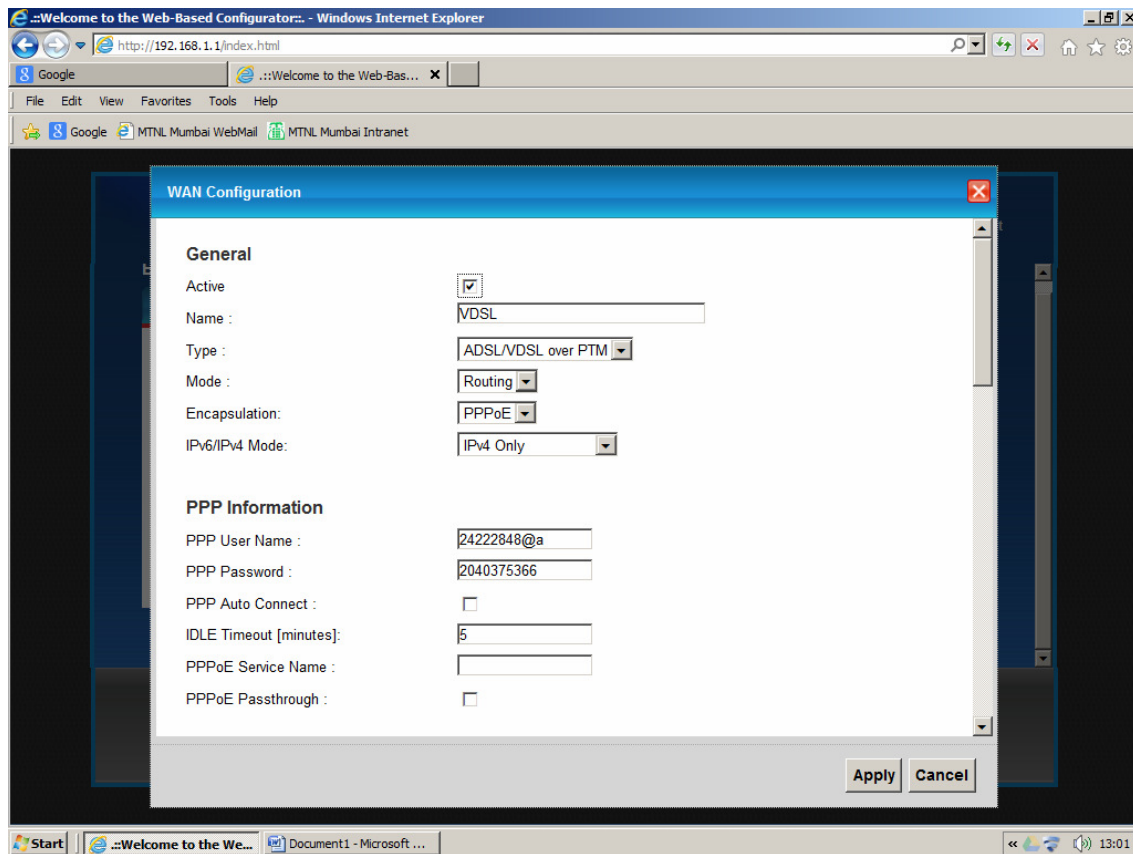
✓ Tick on Active **Check Box**

Select **PPPoE** Encapsulation

Enter PPP Username as Telephone No. @a

Enter PPP Password as CA No.

Please see the below screen for help



Scroll down

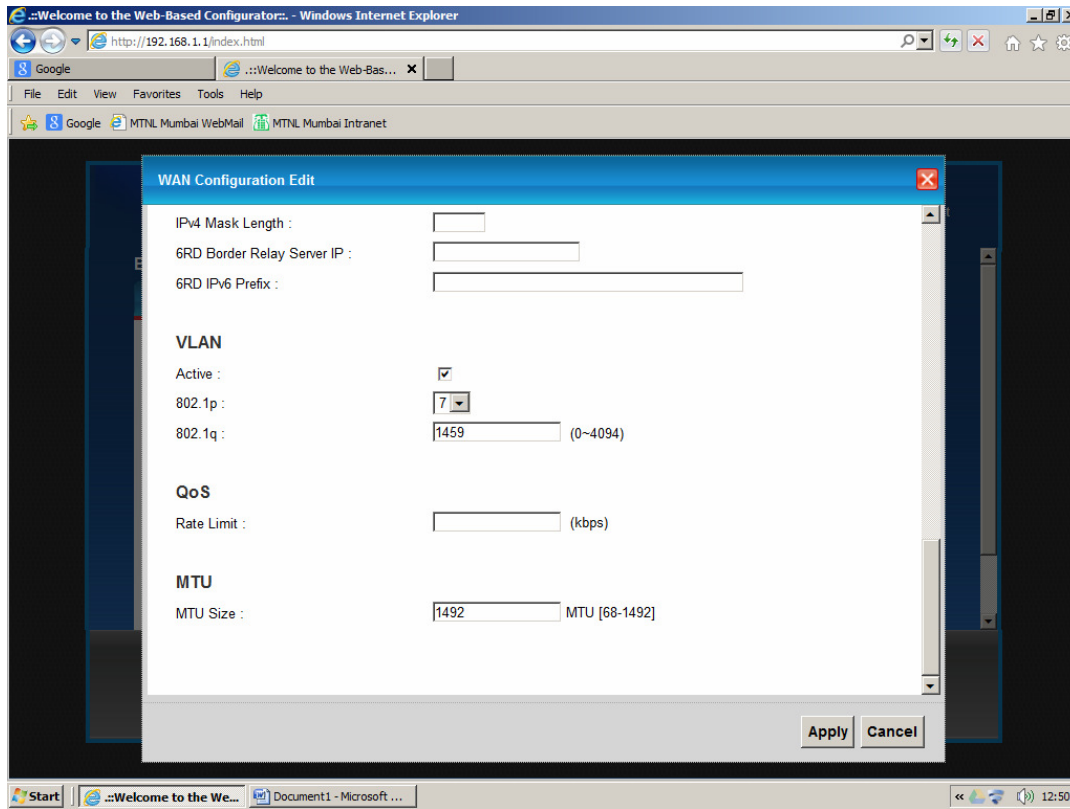
Tick on Active Check Box

Select 802.1p as 7

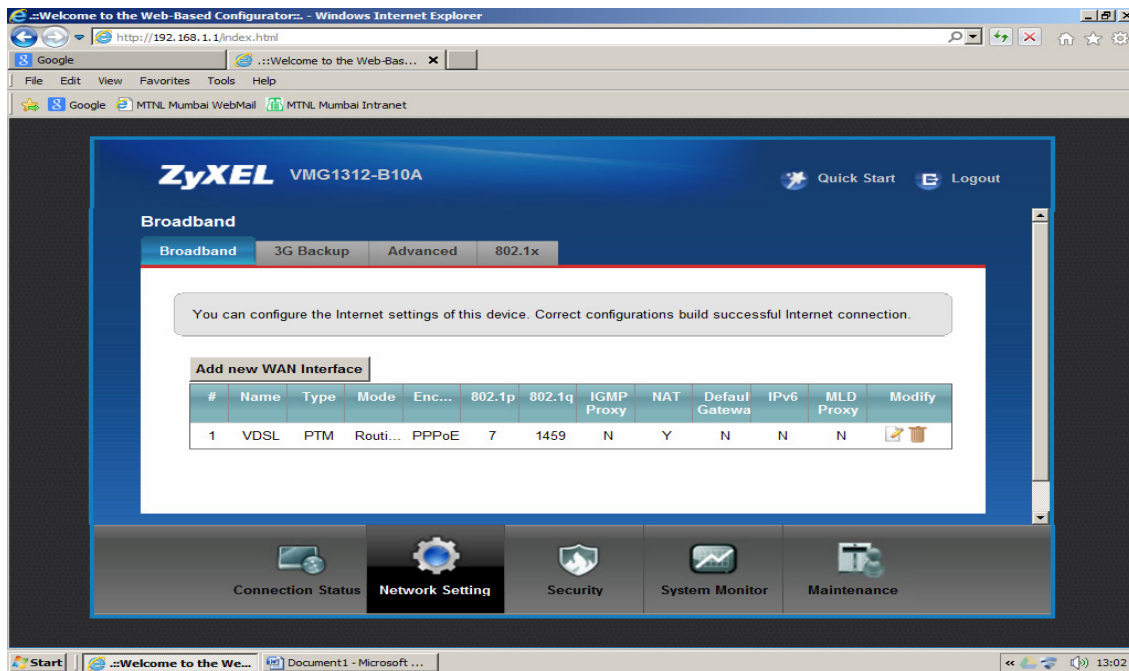
802.1q as VLAN ID of allotted VDSL Port

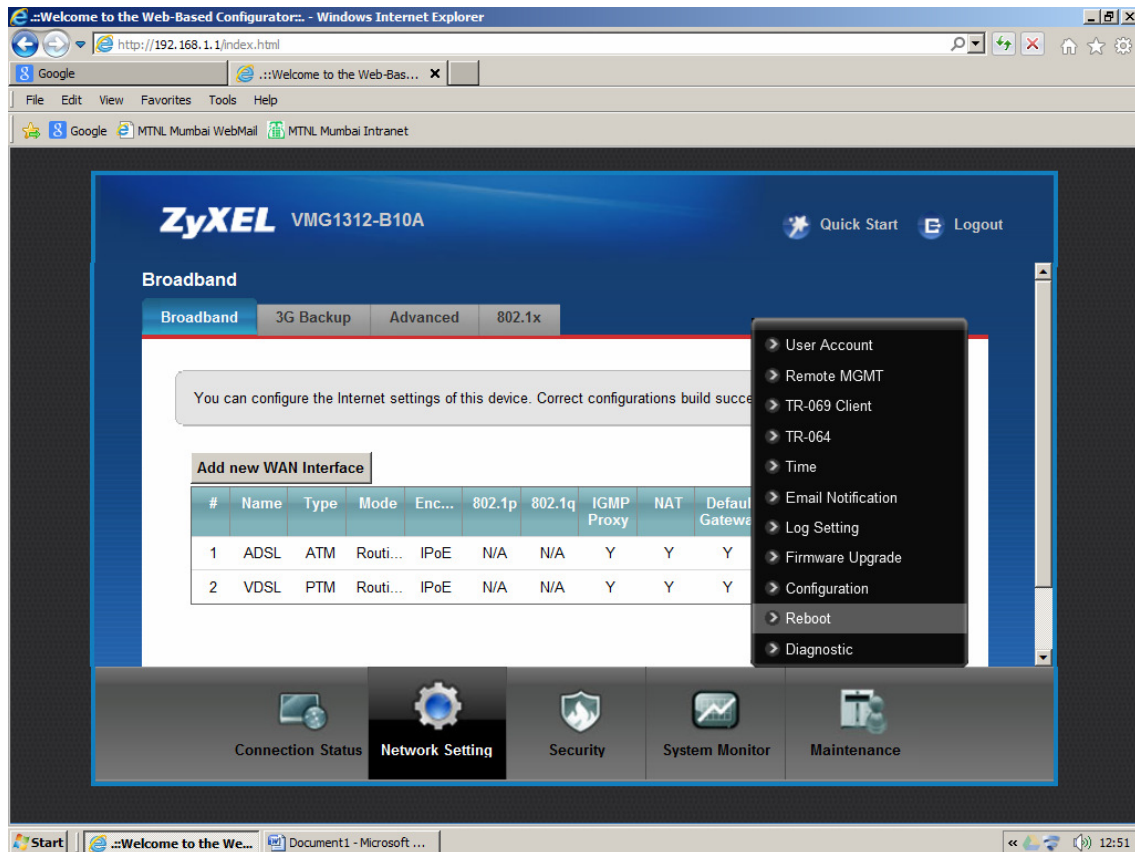
Please see the below screen for help

Then Click on Apply Button



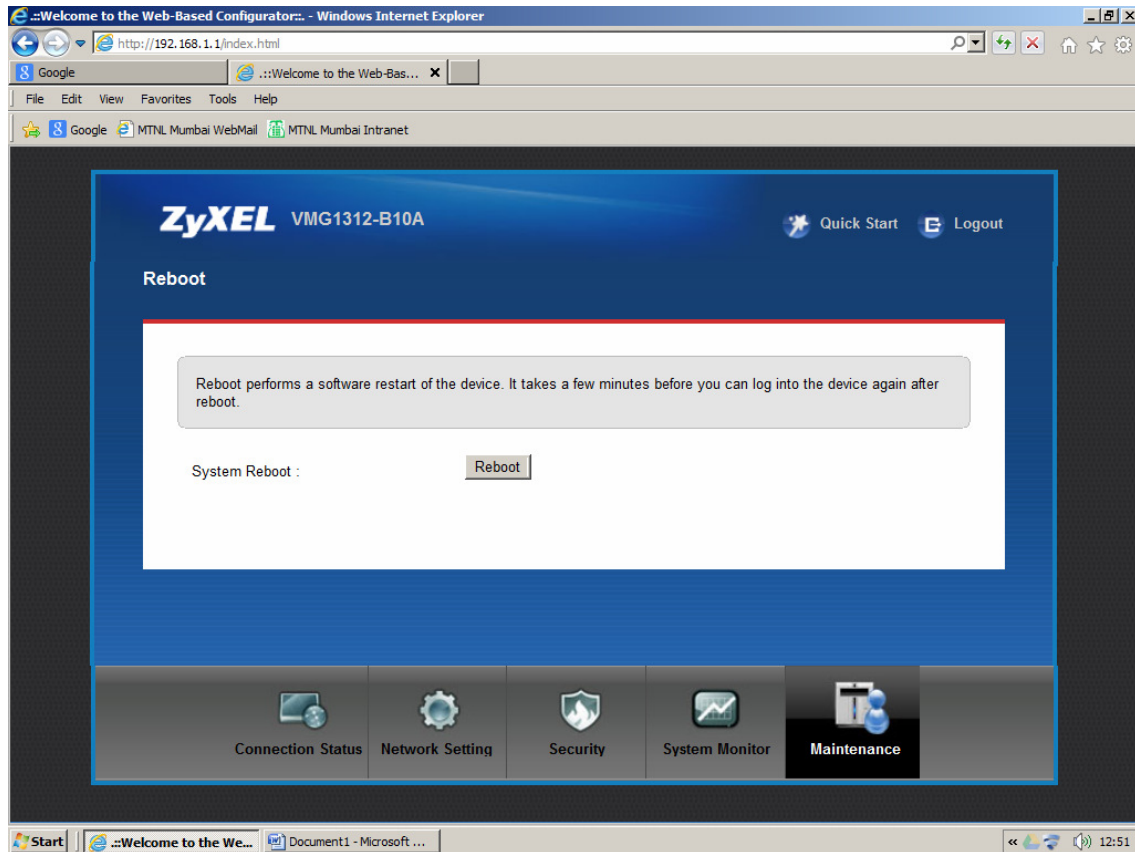
You will get screen as below-





Click on Maintenance

Go to Reboot



Click on Reboot Button

You will get screen as below

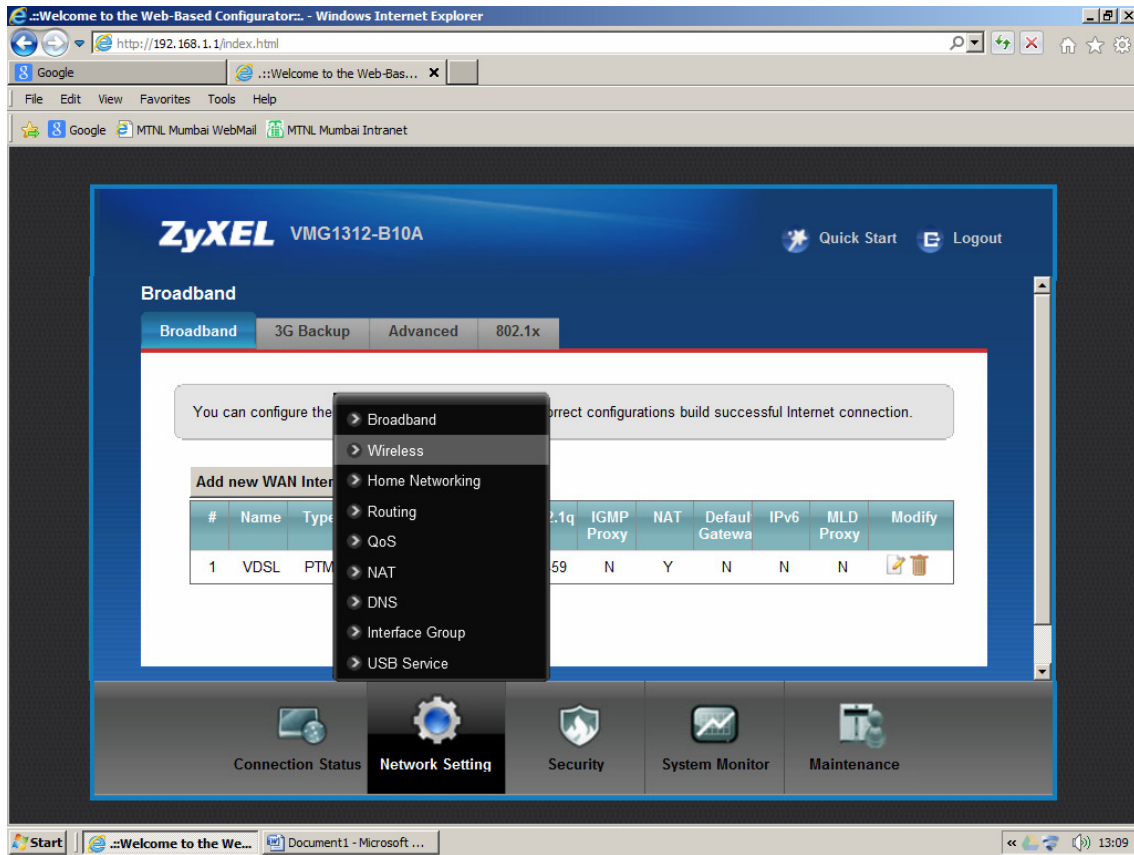
Windows Internet Explorer window showing the ZyXEL VMG1312-B10A web-based configurator interface. The browser address bar displays `http://192.168.1.1/index.html`. The page title is "Welcome to the Web-Based Configurator...".

The main content area displays the ZyXEL logo and model number "VMG1312-B10A". Navigation links for "Quick Start" and "Logout" are visible. The "Reboot" section is active, showing a message: "Router is restarting now. Please wait ...". Below this message, a note states: "As there will be no indication of when the process is complete, please wait for one minute before attempting to access the router again."

The bottom navigation bar includes icons for "Connection Status", "Network Setting", "Security", "System Monitor", and "Maintenance".

The Windows taskbar at the bottom shows the Start button, the active browser window, a "Document1 - Microsoft ..." window, and the system tray with the time 12:52.

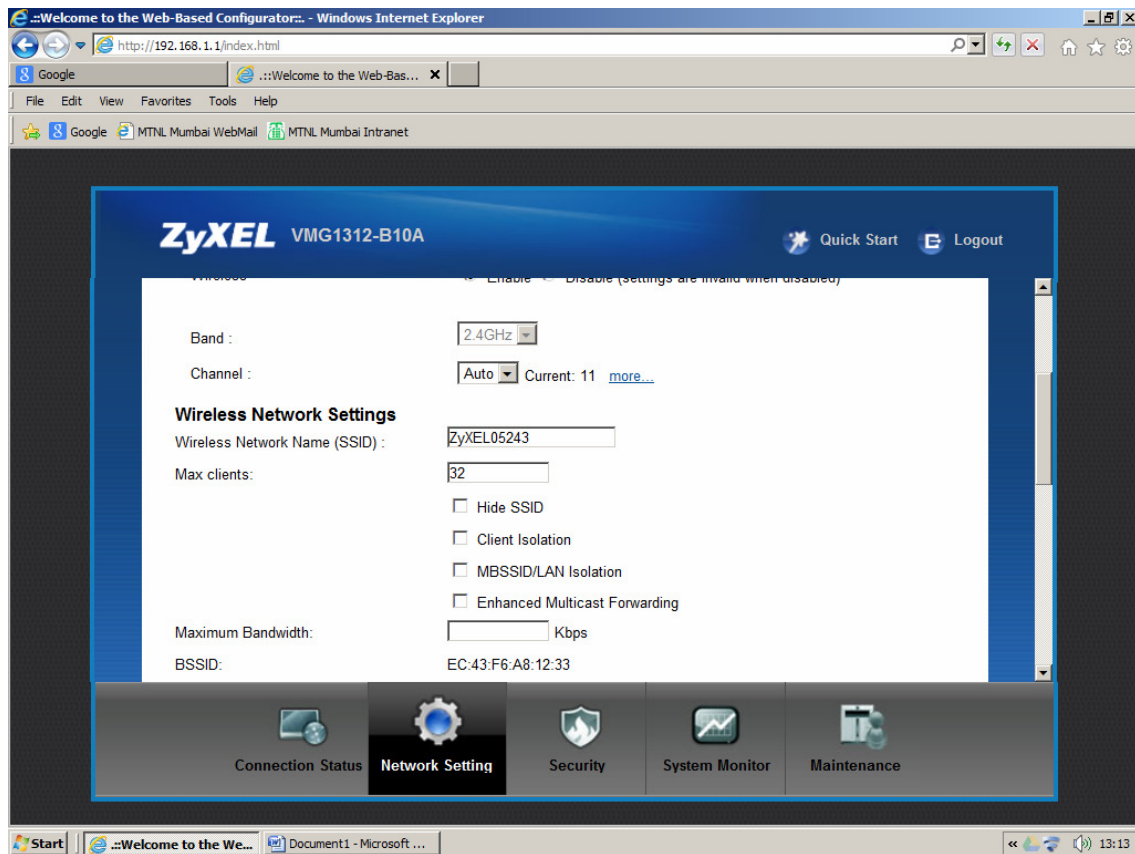
Wireless Configuration

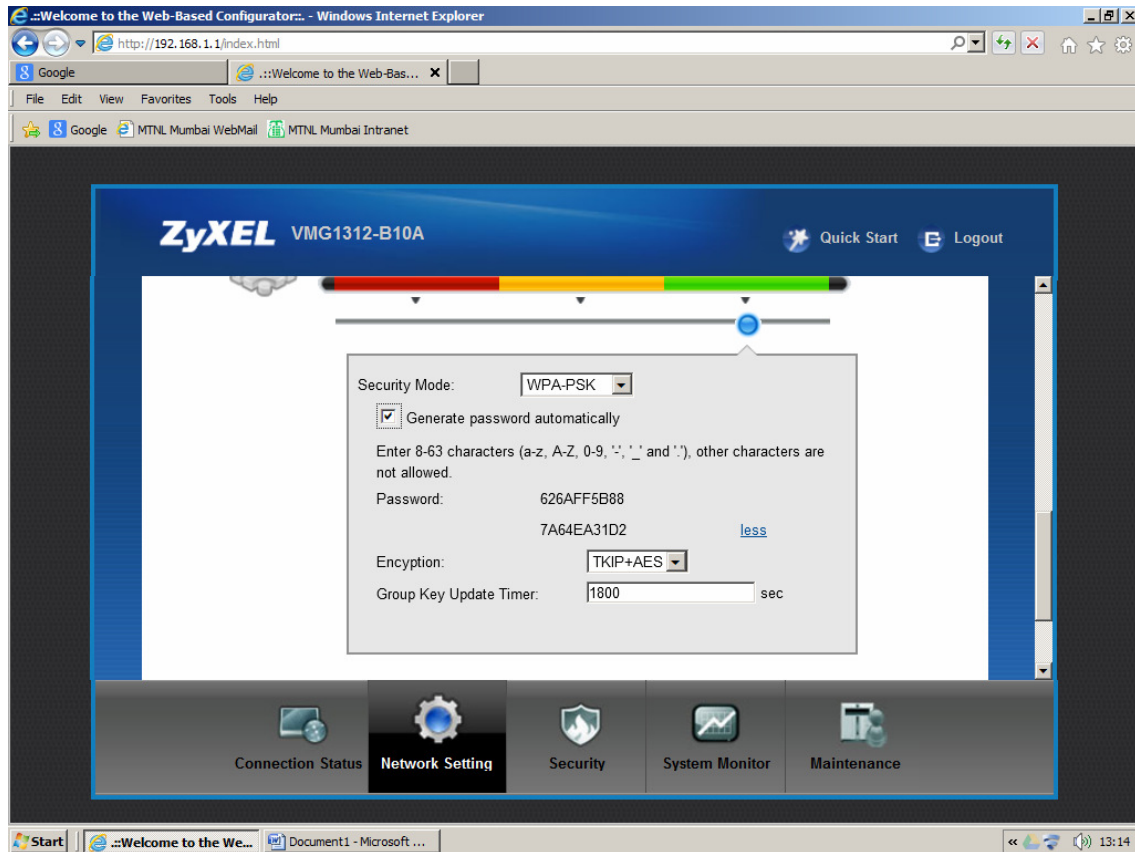


Click on Network Setting

Go to Wireless

You can Change SSID as per Customer Choice





You can Change the Password after removing the tick of Generate password automatically.